



## CORPORATE RESPONSIBILITY

In our community where we live, work and build with pride.

Vivid Contracting Inc. builds with pride, in the community and for the community – doing business for good.

At Vivid Contracting we believe it's our responsibility to help make the world a better place, starting right here at home, in Ottawa, and we do this through our commitment to doing business the right way and investing in efforts to create positive change for people and our communities. Our corporate responsibility is deeply rooted in giving back to and working conscientiously for our community. At Vivid we don't just build projects — we build leaders and communities with a commitment to sustainable business practices.

From long-term strategic goals to day -to-day operations, we continually align these practices as we continue to innovate and grow within a sustainable framework to preserve our future as a company and as a community. We take pride in the communities where we live and work, and we support them by giving back through initiatives, donations and volunteering.





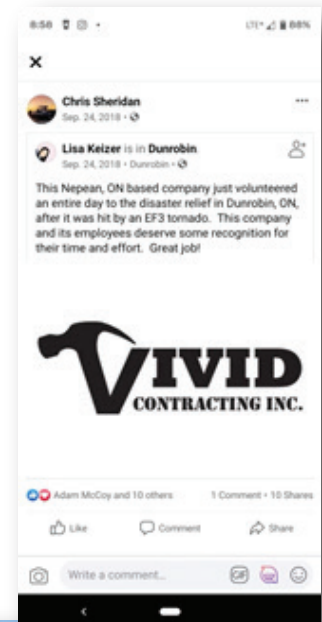
## CORPORATE RESPONSIBILITY

### STRENGTHENING COMMUNITIES

We take pride in the communities where we live and work, and we support them by giving back through initiatives, donations and volunteering.

#### 2018 DUNROBIN TORNADO DISASTER RELIEF

Following the tornado that tore through the west Ottawa community of Dunrobin in 2018, Vivid Contracting rallied it's employees into emergency recovery mode. Vivid volunteered it's time to help with disaster relief in Dunrobin, Ontario following the EF3 tornado. Dunrobin was one of the communities hardest hit during the 2018 tornado that swept through the Ottawa Valley. Vivid came out in droves to clear the debris and help the community.





## CORPORATE RESPONSIBILITY

### *MS BIKE RIDE 2015 TO 2021: OTTAWA TO CORNWALL & BACK – 215km*

For the past 6 years VCI has participated in the MS Bike ride from Ottawa to Cornwall and 2021 will see us participate again to raise funds for this important cause. The Ottawa team has raised over \$42,000 in total that goes directly towards finding a cure for Multiple Sclerosis.

The MS CHAPTER here in Ottawa discovered a stem cell and immunoablation treatment option for people with aggressive MS at The Ottawa Hospital. Right here in Ottawa! Canadians made this happen. People like you made this happen. The Canadian Bone Marrow Transplantation trial was funded through money raised from events like the MS Bike! This is an important and inspiring milestone for MS patients, their families and friends.

Vivid Contracting Inc. is a proud partner of the MS Society of Canada. Our support means Canadian families who are affected by this disease do not have to face MS alone. We are proud to ride and to continue to support MS research for another year!







## CORPORATE RESPONSIBILITY

### *VIVID ANNUAL PIGROAST FUNDRAISER: SUPPORTING OUR COMMUNITY THROUGH FOOD*

Starting in 2017 Vivid marked it's 10th anniversary with a pig roast fundraiser that has since become an annual initiative raising funds for the MS Society of Canada and Alzheimer Society of Canada respectively.





## **CORPORATE RESPONSIBILITY**

### ***EMPOWERING PEOPLE***

People – employees, clients and partners – are at the core of everything we do. We are driven to keep them safe, inspired and empowered. Our Corporate Community practices have positive social and environmental impact on the communities in which we operate.

#### ***SCOTT LOPES, VIVID FOUNDER & CEO – Ottawa Portuguese Business Association***

The Ottawa Portuguese Business Association leads the city-wide Portuguese business community to create jobs and grow the economy.

Scott Lopes, Vivid Founder & CEO, represents the Ottawa Portuguese Community as an advocate and partner for more than 20 years. Lopes joins the association, a broad-based business org that represents business owners and professionals in National Capital Region of Ottawa.



The volunteer board represents businesses of all types and sizes across the NCR. These business leaders are responsible for initiatives that support the Portuguese business community and help shape the association's efforts.



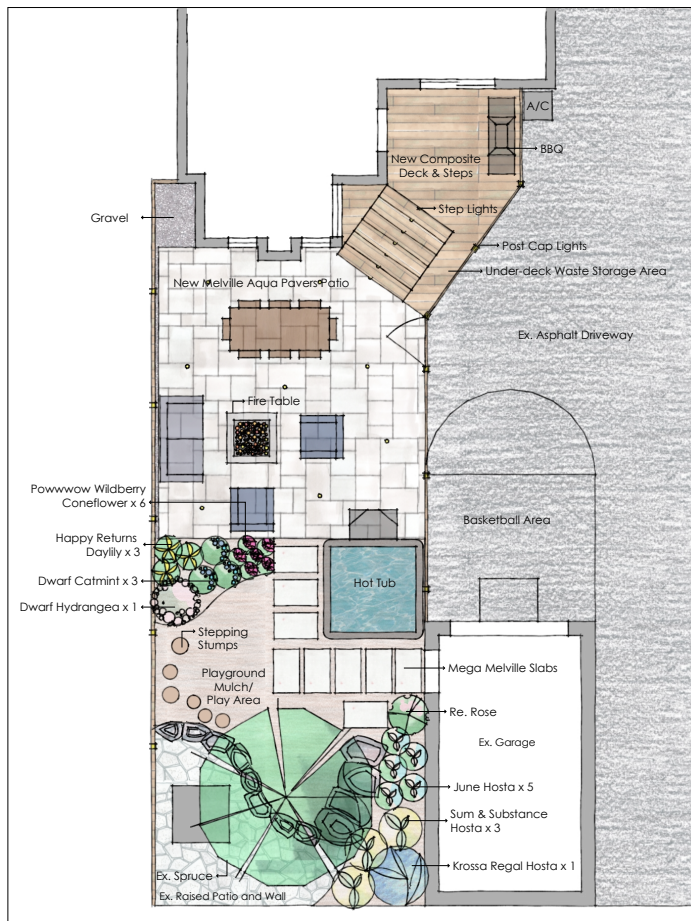
# CORPORATE RESPONSIBILITY

## PROTECTING OUR NATURAL RESOURCES

we are working to minimize our impact on the environment through sustainable initiatives in our workplace, in the products we make and in the way we operate.

**CERTIFIED FUSION LANDSCAPE PROFESSIONALS AND LOT LEVEL STORM WATER MANAGEMENT. VIVID PROMOTES PERMEABLE PAVEMENT APPLICATIONS AND PROPER WATER MANAGEMENT THROUGH DESIGN.**

We believe in science for a changing world, permeable pavement is a porous urban surface which catches precipitation and surface runoff, storing it in the reservoir while slowly allowing it to infiltrate into the soil below. On the heels of a big market transformation; the goal is to make water-efficient, low-impact landscapes, that are visually appealing and interesting, the new industry standard.



Qty	Botanical Name	Common Name	Size
6	Echinacea purpurea 'Powwow Wildberry'	Powwow Wildberry Coneflower	1g
3	Hemerocallis 'Happy Returns'	Happy Returns Daylily	1g
1	Hydrangea paniculata 'Bobo'	Dwarf Hydrangea	1g
5	Hosta 'June'	June Hosta	1g
1	Hosta 'Krossa Regal'	Krossa Regal Hosta	1g
3	Hosta 'Sum & Substance'	Sum & Substance Hosta	1g
3	Nepeta x Toassenii 'Pursian Blue'	Dwarf Catmint	1g
1 Ex	Picea sp.	Spruce	N/A
1 Re	Rosa sp.	Rose	N/A

Ex = Existing Re = Relocated



Clockwise from top left: Composite steps and lights, Melville Aqua Pavers, Dwarf Hydrangea, Dwarf Catmint, Playground Mulch, Powwow Wildberry Coneflower, Sum & Substance Hosta, Happy Returns Daylily, June Hosta, Krossa Regal Hosta



### Notes / Takeoffs:

- Melville Aqua Paver Patio = 365 sq ft plus pad base for hot tub
- Melville Mega Slabs = 9 units
- Composite Deck & Steps = 140 sq ft
- Garden Bed = 105 sq ft
- Playground mulch area = 160 sq ft
- Cedar Fence = 40 lin. ft. at 7' H at grade (West Side around garage to upper deck and includes gate)
- Fence to step up additional 42" at top step
- Gate = 42"
- Waste storage area = 2'6" x 11'







## CORPORATE RESPONSIBILITY



### ***VIVID MOVES TO SUSTAINABLE ICF FOUNDATIONS: A MORE ENERGY EFFICIENT WAY FORWARD***

Insulated concrete form (ICF) is a way to lay a building's foundation or entire framework. The technology was developed in the late 60s and uses interlocking polystyrene "walls". The polystyrene is used to build the outside form of the foundation or entire building envelope. All reinforcing rebar is placed in brackets formed into the polystyrene walls within the form for added strength.

